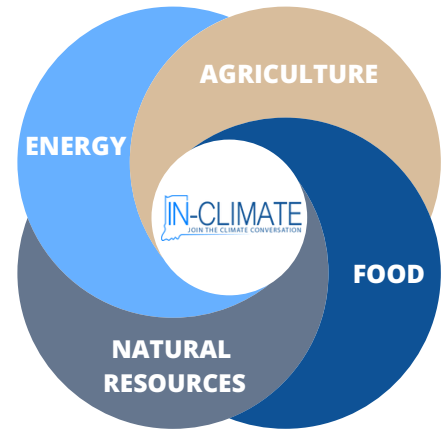


What is IN-CLIMATE?

IN-CLIMATE is a growing network of professionals representing the food supply chain, energy, and natural resources sectors seeking to build a productive, practical dialog on climate. In this first-of-its-kind group, members become trusted partners, collaborators, and peer educators that gather for collaborative discussions, educational forums, and information sharing that aims to lead to sound, effective decision-making and balanced climate policy.

Our members participate in advancing their own, unique version of the Six Pillars of the Climate Conversation: carbon markets and carbon sequestration, sustainability and conservation, renewable energy and smart energy transition, advanced bio and renewable fuels, green finance and climate-smart funding, and attention to consumer pressures and public perception.

IN-CLIMATE's home base is Indiana yet we are working to engage broad stakeholders and build a borderless network that represents the global nature of our industries and the climate conversation.



OUR MISSION

IN-CLIMATE's mission is to convene diverse stakeholders across the entire food supply chain in a collaborative dialog to advance decision-making and balanced climate policies.

PURPOSE AND FUNCTIONS

Lead: Challenge and encourage our members and their customers and stakeholders to step into sustainability and the climate conversation in a way that actively represents their goals and supports our agricultural production systems and all consumers.

Collaborate: Work across the food supply chain, natural resources, and energy sectors to improve leaders' awareness and encourage open dialog within the climate conversation.

Inform: Provide resources for climate information, data, and unbiased content on digital platforms.

Explore: Research attitudes and adaptation of climate-related policy and practices through survey collection and data distribution.

Engage: Communicate with founders and stakeholders in quarterly policy round tables, monthly virtual meetings, and annual events to discuss climate.

CONTACT US

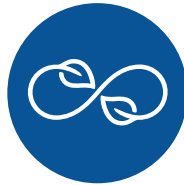
inclimateconversations.com

sarah@inclimateindiana.com

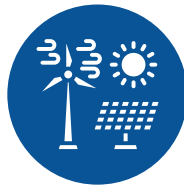
THE SIX PILLARS OF THE **CLIMATE AGRICULTURE** CONVERSATION



CARBON MARKETS AND
CARBON SEQUESTRATION



SUSTAINABILITY AND
CONSERVATION



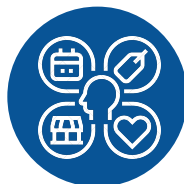
RENEWABLE ENERGY AND
ENERGY TRANSITION



ADVANCED BIO-FUELS AND
RENEWABLE FUELS



GREEN FINANCE AND
CLIMATE SMART FUNDING



CONSUMER PRESSURES AND
PUBLIC PERCEPTION

Introducing the new membership levels for IN-CLIMATE, the leading organization for sustainability in Indiana! By joining IN-CLIMATE, you demonstrate your commitment to climate-positive practices in a way that fits your organization. Our members are essential leaders in the bigger conversation for a more sustainable future.

WHO SHOULD JOIN IN-CLIMATE?

As an IN-CLIMATE **Founder**, individual leaders upgrade their involvement by joining the Board of Advisors. Once approved, the Founder participates in board meetings, provides input on strategic decisions, and guides the direction of the organization along with the IN-CLIMATE CEO and team.

Stakeholders are engaged in the climate conversation without a multi-year financial or board of advisors commitment. This level offers big impact at a lower cost that fits many local budgets. Benefits include discounted tickets to all private events and meetings, your company's logo and link back to your website, and access to educational resources.

Becoming a **Supporter** is a non-member contribution, perfect for non-profit organizations, government agencies, individual citizens, and any group seeking to demonstrate support for IN-CLIMATE and our work to advance a productive, practical dialog around climate. This contribution includes a discount code for any ticketed event, a badge to showcase your support, and an annual State of Climate Economy Report.

Company leaders seeking a substantial impact on sustainability and a desire to turn plans into action should consider the **Investor** level. By making a \$100,000 or more annual commitment, Investors have the opportunity to co-brand projects (with Founder approval) and enjoy all the benefits of being a Founder with the exclusion of a board seat.

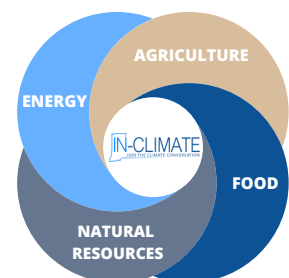
Need to create and lead the climate dialog in your state and need support to organize stakeholders and leaders? Let IN-CLIMATE set up a chapter for you! Our Chapter Charter level is the ultimate choice for those who want to take the lead in their state and establish their own IN-CLIMATE chapter. With a commitment of 2 years (pricing depending on the state and level of involvement), you'll have the opportunity to work with a dedicated program director who will guide you in setting up an IN-CLIMATE member chapter with our proven system and launching it in your own area.

Join us at IN-CLIMATE and join the conversation!

CONTACT US

inclimateconversations.com

sarah@inclimateindiana.com



CHAPTER CHARTER

\$400,000 and up
per year for 2
years

What it is:

- Access to the Indiana IN-CLIMATE team to provide support to founding organizations to create IN-CLIMATE chapter in your state
- Indiana IN-CLIMATE team will aide in recruiting, message building, as well as interview potential stakeholders, host launch events, help design and launch website and social media platforms, and provide a dedicated in-state program manager

This Membership level fits for:

- Collaboration of organizations seeking to fund major climate and sustainability initiatives and desire to carry the effort forward in their home state
- Organizations that wish to generally support the goals of IN-CLIMATE by providing dollars to fund overall organizational objectives or custom/specific projects in their own state.
- Organizations seeking a way to show investors, customers, and the public their involvement in climate and sustainability even if they are not necessarily ready to publish their own GHG reduction commitments or Sustainable Development Goals (SDGs)
- Organizations that want to show stakeholders that by continuing to work with them, they are bringing a company that is leading the climate conversation and is actively working to be climate smart
- Organizations that desire to provide regular information, knowledge, and education on climate topics
- Organizations that want to ensure that the climate conversation in their state represents their company and constituents by leading in the space, whether they prefer to do so at the front of the room or behind the scenes
- Organizations that align with **IN-CLIMATE's 6 pillars**

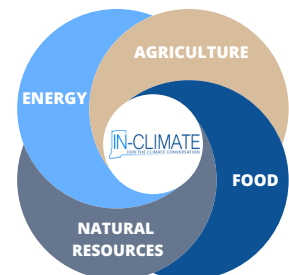
Benefits:

- Show up as a leading climate solutions organization in your state
- Option to co-brand projects for name recognition and marketing
- Page dedicated to your state and new 'founding member' special highlight on the IN-CLIMATE website with video/images and description of your current sustainability success and goals
- Links back to your website
- Syndicated column package with permissions to use presentations, blog posts, articles, infographics and more (a \$10,000 value)
- Company representative photo on IN-CLIMATE website
- Files and documents to host and create your own state wide events such as:
 - Summit
 - Roundtables
 - Stepping into Sustainability

CONTACT US

inclimateconversations.com

sarah@inclimateindiana.com



Concerned that your team is not on the same page about climate-related topics relevant to your business and customers? Is that preventing you from moving forward with programs, products, and even publicly discussing your position? Need help better understanding definitions around topics like ESG? This benefit will get your team in the climate conversations!

HALF-DAY CLIMATE STRATEGY SESSION

What's Included?

- Pre-interviews with key team members (up to five included)
- Blind climate attitudes and knowledge gap survey conducted within team
- Aggregated results presented during session
- Half-day strategy session held in the Indianapolis area
- Post-session recommendations and follow up actions prepared with post debrief call
- for leaders
- Can be hosted at your location or as an off site; catering and venue rental and planning not included

Details

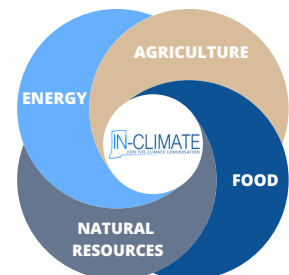
- Complimentary for Founders one time per year
- Fifty percent off for Stakeholders (cost of \$5,000)

Navigating today's emerging pressures from investors, customers, and stakeholders means developing a strategy to address climate-related topics at a high level is now not an option. Yet, if you're like many IN-CLIMATE members, you still need to build consensus internally. With this benefit, we gather your team, leadership committee, or board to discuss climate and sustainability-related topics to begin determining your internal and forward-facing positions on climate, carbon markets, topics such as Scope 1, 2, and 3, ESG, green finance, and more. This half day facilitated retreat includes pre- and post-interviews, blind team surveys with results presented in aggregate, and the strategic planning session.

CONTACT US

inclimateconversations.com

sarah@inclimateindiana.com



IN-CLIMATE BADGE

The badge indicates your company's commitment to sustainability and displays your member level within IN-CLIMATE. Displaying the badge on your website shows that your company is working with us to advance sustainable practices and is part of the climate conversation.



CONTACT US

inclimateconversations.com

sarah@inclimateindiana.com

